



## A sample Uganda safari planned by Safari Experts

### Day 1 Lake Victoria Hotel - Entebbe, Uganda

Met upon arrival at Entebbe and transfer to the famous colonial style Lake Victoria Hotel.

### Day 2 - 3 Ndali Lodge



After a lie in and breakfast, set out on 6 hour drive through beautiful Ugandan countryside to Kibale Forest. The beautiful Ndali Lodge is situated on a high saddle between two crater lakes. The breathtaking views and cooler climate at Ndali are just some of its best features. The lodge was built by the late Captain Mark Price, a British tea farmer, and is managed as a working farm by his family today.

The rooms are decorated in local crafts and materials, and feature high ceilings and four poster beds with mosquito netting. The en suite baths have hot and cold running water and flush toilets.

There is no electricity at this lodge, but ample candle and oil lamps are provided in the evening, creating a romantic feel of "old Africa".

Take a walk in the forest to search for the fascinating chimpanzees with experienced local guides, and a walk through the nearby Papyrus Swamp, excellent for birds including Great Blue Turaco, and to look for other primates. Other primates often seen whilst chimp trekking...Black and White Colobus, Red Colobus. Red Tailed Monkey, Grey Cheeked Manglebay, L'Hoests Monkey and Blue Monkeys.

### Day 4 - 5 Mweya Lodge - Queen Elizabeth National Park

Depart Ndali Lodge Saturday morning on your 3 ½ hour drive to Queen Elizabeth National Park. Met upon arrival and transfer to the Mweya Lodge. Mweya Lodge has recently been completely renovated to a high standard, excellent en suite rooms, restaurant, bar area, pool and outside dining. Excellent service and a wide variety of food are served in the dining area whilst one enjoys the stunning views and wildlife not far way. Mweya Lodge is situated on a peninsula overlooking Lake Edward and Kasinga Channel, offering beautiful views of the park with the Ruwenzori Mountains in the background. Game drive today.



The following day take a Launch trip on the Kasinga Channel, game drive in the evening.

## Day 6 Jacana Lodge



This morning you will hike the Chambura Gorge. A hidden gorge (Chambura meaning hidden) on the floor of the Rift Valley, hence a valley within a valley. One drives on the plains of the Rift Valley and cannot see the gorge until within about 50 yards away. Standing on the edge it is quite spectacular to see the Rain forest below and the different flora and fauna from what is on the plains. The walk down can be steep, but with experienced guides the easiest route is taken. Once within the gorge, it is a rain forest experience, with forest birds and primates, including chimps. The small river is crossed on fallen logs and the trackers do their best to show you as much as possible in this unique hidden rain forest. The trek usually lasts half a day, returning to the rim in time to drive to Jacana Lodge for lunch, only about 45 minutes away.

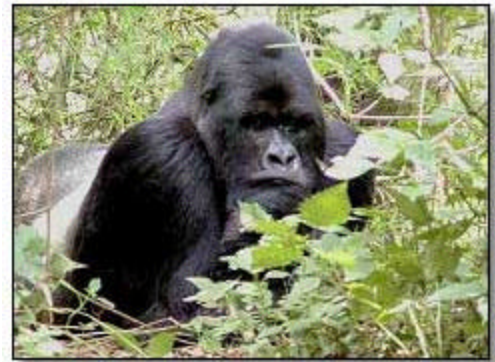
Jacana Lodge is situated in Maramagambo Forest in the South/East sector of Queen Elizabeth National Park, on the shores of Lake Nyamasingiri. This afternoon take a Maramagambo Forest walk to the bat caves that can be observed from above, seeing thousands of bats and often a python and/or monitor lizards are seen catching the bats.

## Day 7 - 8 Gorilla Forest Camp

### *Bwindi Impenetrable Forest*

Drive though Ishasha region (if road conditions allow) - famous for its tree climbing lions, game drive, then to the Bwindi Impenetrable Forest and the Gorilla Forest Camp. (approx 4 hour drive)

The camp is located within Bwindi Impenetrable Forest, commanding excellent views of the forest from the dining and bar area. Each tent is of Selous style, with single beds, vanity and en suite shower and toilet and yes, flush toilets!!



Wednesday and Thursday will be spent trekking through this unique montane forest for the endangered Mountain Gorillas and if time to a waterfall, and look for other primates.

## Day 9 Agip Motel – Mbarara

Drive to Mbarara passing through the Switzerland of East Africa area and eventually into Ankole Cattle country around Mbarara. These cattle are incredible with horns larger than one can imagine. The driving today is about 6 - 7 hours. If time permits we can walk through the interesting local market, where everything from a bolt of cloth to meat to fruits and vegetables are on display for sale.

## Day 10 - Day 11 Lake Victoria Hotel – Entebbe

Depart Mbarara this morning on your drive to Entebbe. (approx 3-4 hours) Stop in Kampala along the way for lunch and shopping in the local markets.

Day at leisure. You may choose to walk to the Entebbe Gardens, Uganda Wildlife and Education Centre, or the Entebbe market and town.

## Day 12 Departure to London



Transfer to the airport on the hotel shuttle bus in time for check in at 7:20am.

This safari is carried out by road, to reduce the cost. Driving through this attractive country is a memorable experience, and the roads are generally fairly good. Using air charters for some sectors is my preferred option to save time, though it is more costly.

If you have time, an extension to the Northwest of the country to visit the Murchison Falls is well worthwhile.